

**Experiences with the implementation of EC legislation on
landfilling of waste
Findings from previous events**



**Information Exchange and Awareness Raising Event
on LANDFILL of Waste**

Poland

Gdansk, 27 - 28 February 2007

BiPRO

1



Topics

Implementation of the new Regulation – major priorities, problems and deficits and examples of good practice

(1) Experiences from the Czech Republic



(2) Experiences from Slovenia



(3) Experiences from the Baltic States





Major problems and deficits as identified in the Czech Republic

- (1) DOC limit values set in Decision 2003/33/EC are exceeded significantly (e.g. soils, C&D waste)
- (2) Energy recovery from landfill gases at small landfills is not economically viable
- (3) Interpretation of some provisions such as treatment prior to landfill (Art. 6 1999/31/EC) and requirements for basic characterisation (2003/33/EC)
- (4) Representativity of samples, qualification and independency of analysing laboratory
- (5) Still high amount of biodegradable fractions in landfilled waste (e.g. mixed MSW)
- (6) Separation at source, separate collection, quality of recovered materials

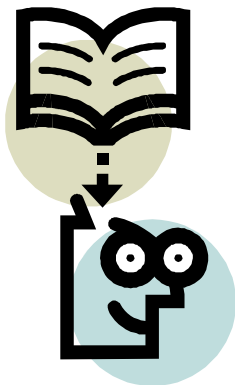


Examples for good practice as identified in the Czech Republic

- (1) Early transposition of low DOC limit in Czech legislation
- (2) Planned combined control activities of environmental inspectorates and polices
- (3) Planned review of fines in case of violation
- (4) Standardised documents and guideline for basic characterisation established at national level
- (5) Training of regional authorities has been performed; regular meetings with central authorities
- (6) Evaluation of waste management on a yearly basis by means of indicators (enables quick reaction)
- (7) Continuous reduction of number of landfills since 1995
- (8) Investigation in alternative treatment and recovery methods for waste



Priority activities for implementation of landfill directive requirements in the Czech Republic



- (1) Thorough application of permit requirements by regional and local authorities
- (2) Further effort to reduce landfill of waste and organic fractions with priority on improved separation at source and expansion of alternative treatment methods
- (3) Identification and compilation of data on illegal landfills at national level (currently management under responsibility of municipalities, no data compilation at national level)
- (4) Rated weight dependent waste management fees for citizens



Major problems and deficits as identified in Slovenia

- (1) Classification of certain waste streams as waste or as secondary raw material (e.g. construction and demolition waste)
- (2) The illegal dumping of waste
- (3) Deficits in investments into landfill standard by operator due to uncertainty which landfill will be allowed for further exploitation (quick decision at authority level needed)





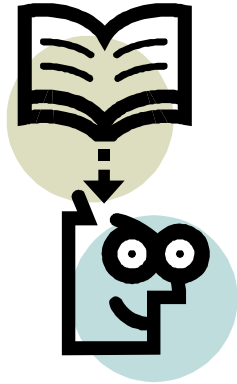
Examples for good practice as identified in Slovenia

- (1) Raised landfill tax (by 1.1.2007) as tool to stimulate more separation and recovery.
- (2) MoE and the Chamber of Commerce provide training courses concerning legal and technical requirements addressed to the landfill operator
- (3) Qualification standards for landfill operator and the working staff exist
- (4) Information material, visits and open days organised by landfills for information of the population





Priority activities for implementation of landfill directive requirements in Slovenia



- (1) Introduction of revised (higher) tariff system for citizens to raise financial incentive to use established collection points.
- (2) Introduction of electronic system for data collection from landfill operators (currently data are gathered in paper form due to data protection requirements and cannot be used for other purposes (e.g. estimation of landfill tax))



Major problems and deficits as identified in the Baltic States

- (1) High ratio of landfill
- (2) Huge number of “old, low standard” dumpsites
- (3) Ratio of biodegradable waste fraction still high
- (4) Missing market for landfill generated compost from waste
- (5) Deficits in visual control during on-site verification and sampling for MSW
- (6) Increased illegal dumping of waste and littering since closure of old dumpsites and establishment of new regional landfills and fee system
- (7) Important deficits in coverage of population in rural areas
- (8) Lack of acceptance and understanding in population
- (9) “Wrong” incentives arising from fee system and reimbursement structure



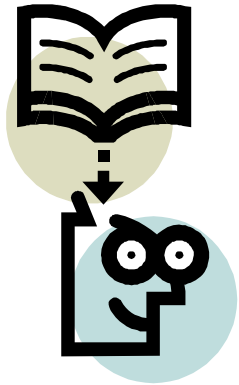
Examples for good practice as identified in the Baltic States

- (1) “Private” initiatives of landfill operators and collectors e.g. Green Dot Latvia for separate collection systems and environmental education
- (2) Destruction of access roads to closed dumpsites to prevent further use.
- (3) Anonymous phone number at Environmental Inspectorate to inform about illegal dumping of waste.





Priority activities for implementation of landfill directive requirements in the Baltic States



- (1) Speed up closure, recultivation and aftercare of “old” dumpsites
- (2) Increase awareness and cooperation of citizens
- (3) Speed up process of complete coverage of population
- (4) Take action to reduce amount landfilled and mixed MSW by improved separation and development of alternative treatment methods
- (5) Develop financial incentives to increase use of the separate collection systems
- (6) Change reimbursement for municipalities to give incentives for better development of take-back systems, separation and collection



Suggestions addressing the European Commission for supporting the implementation

- (1) Enhance **cooperation within the IMPEL Network** and support special projects for better implementation.
- (2) Provide guidance on waste acceptance criteria decision (basic characterisation, treatment prior to landfill, sectors, sampling-analysis, on-site verification, use of waste tyres for engineering purpose)
- (3) Participate in development of solution for waste types exceeding limit values
- (4) Provide improved definition of and guidance on **biodegradable waste**. (Harmonised calculation method for all MS introduced into EUROSTAT)
- (5) Establish procedure for **re-categorising certain waste-streams** as secondary material