



Introduction to the EU Project for „Information Exchange and Awareness Raising events on landfill of waste“



“Information Exchange Event on landfill of Waste“
Brussels 14-15 May 2009



Clients and services

**European Commission,
European Parliament**

DG Environment
DG SANCO
DG Research
DG Enterprise and Industry

**National ministries and
authorities in DE, AT, BE...**

Environment
Economy
Health
Research and innovation



- Consulting services for legislative projects
- Solving conflicts between industry and political / administrative bodies
- Technical / Economical studies (new products, business models, production sites, safety reports...)
- Realisation of projects in the field of environment / economy / health

**European and national
associations**

Eurochlor / VCI
FEPA / VDS
...

Companies

Saint Gobain
Daimler Chrysler
Bosch
Dow Chemical
Henkel
...



Main Objective

Increased awareness concerning the Landfill Directive's requirements in order to improve the implementation of the Directive



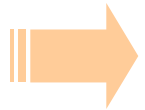
Project tasks

- **Give a comprehensive explanation of current legal provisions** as concerns shipment of waste
- **Identify current problems and deficits and discuss current obstacles** with respect to implementation of requirements
- **Exchange expert information and experience** relative to implementation and arising problems
- **Enhance cooperation**
- **Provide input to guidelines** for co-operation and management of problematic „waste“ streams

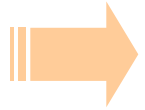


Project tasks

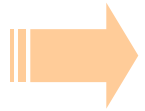
EU Commission intends to actively participate in implementation and wishes to build on practical know-how as regards:



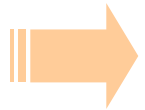
Where and what are the problems encountered?



Where and what are the remaining deficits?



What is working well?



Are there examples that can be used in other MS as well?



Why participate?

Management of landfill of waste

Implementation and enforcement
of legal requirements



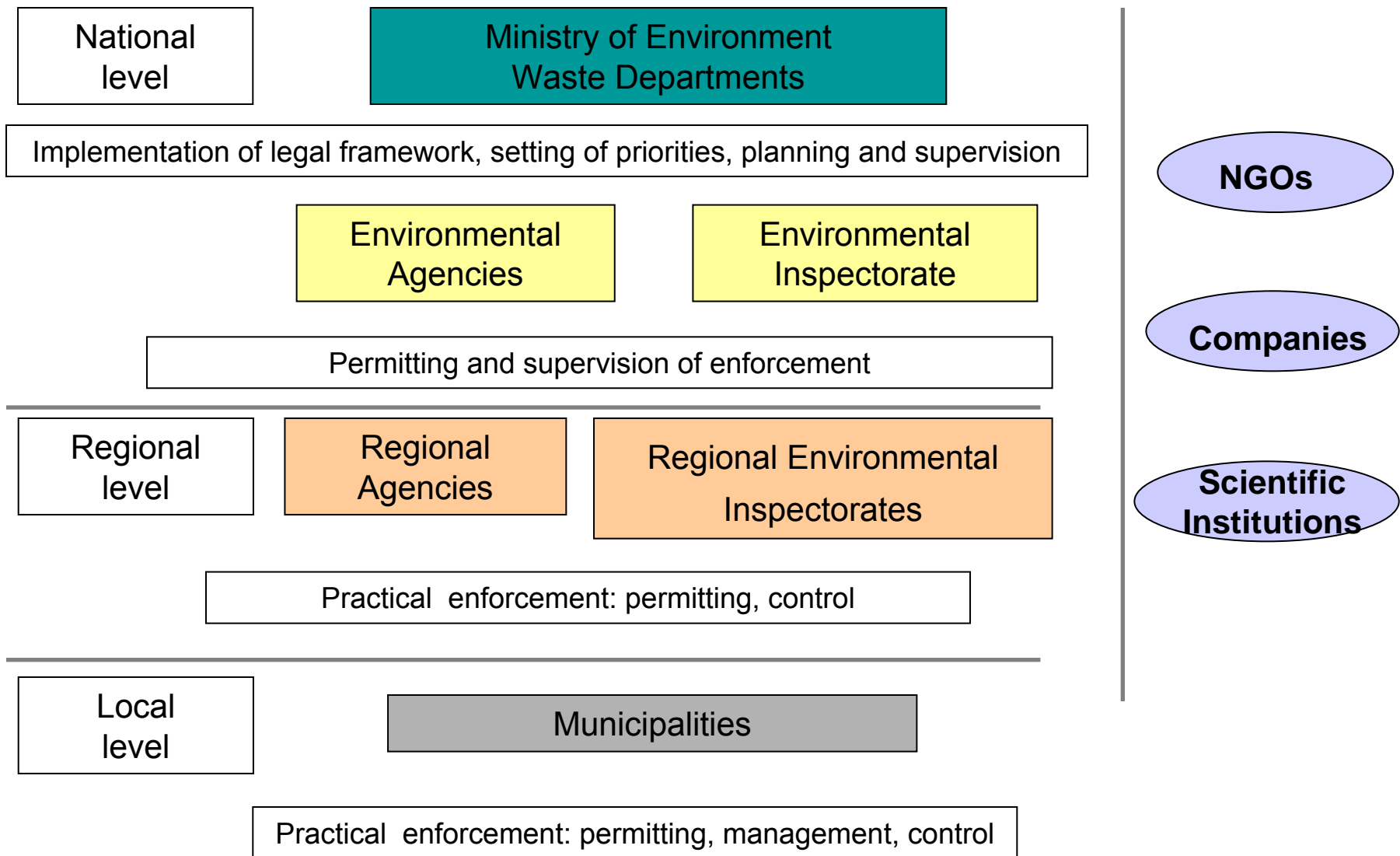
**Involvement of various
authorities / institutions**



*Platform for information
exchange and discussions*

- Participation of representatives of different authorities and regions
→ exchange of experiences made in different regions and context
- Participation of representatives from **European Institutions**
→ information on implementation and enforcement of the legislation
from European point of view
→ direct communication of problems & deficits and proposals for
improvement to European representative

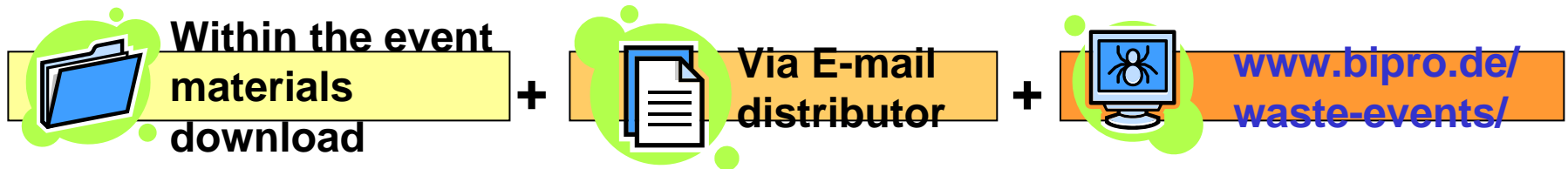
Involved authorities and services for landfill of waste





Information transfer

- Current status of European and national legislation
- Documentation of presentations, discussion and conclusions
- Information on final project results (summaries of all events)



Webpage

The screenshot shows a Windows Internet Explorer browser window displaying a webpage titled "Information Exchange and Awareness Raising Events on LANDFILL of Waste - 2009 in BELGIUM". The browser's address bar shows the URL "http://www.bipro.de/waste-events/land/events09/be.html". The webpage has a navigation menu on the left with items like "Events", "Background/Objectives", "EU Legislation/Legal Cases", "Data/Download", and "Links". The main content area features a table with event details, a registration form section, and travel information.

Events

- Events 2009
 - Ireland
 - France
 - Belgium
- Events 2008
- Events 2007

Background/Objectives

EU Legislation/Legal Cases

Data/Download

Links

Information Exchange and Awareness Raising Events on LANDFILL of Waste - 2009 in BELGIUM

Country	Location	Dates
Belgium	Brussels	14/15 May 2009

Registration form

- [Registration form](#)

Date, Duration and Program

- coming soon

Travel information

- **Location:**
Association of Cities and Regions for Recycling and sustainable Resource management (ACR+)
Avenue d'Auderghem 63
c/o Brussels-Europe Liaison Office
1040 Brussels, BELGIUM
- **Room: Conference room**
- **How to get there**
If you are arriving by plane (Brussels-Zaventem), there are following possibilities to reach ACR+:
 1. by train - Between the airport and the centre of brussels there is a Railway connection. All three big railway stations of brussels (nord, central, midi) are reached. The tact frequency is 20 min. With the Metro you can reach the next station nearby ACR+ (Schuman Station).
 2. by bus - With the Expressline 12 you can reach Metro station Schuman (tact frequency 20 min.).

With a walk along the Avenue d'Auderghem you can reach ACR+ in 300 m



Thank you very much for your attention!

Project website (home): <http://www.bipro.de/waste-events/land/landfill>

→ Brussels: <http://www.bipro.de/waste-events/land/events09/be.html>